



CONTROLS the *Flow*

FABRICATED LIQUID PIPELINE STRAINERS

FAB SERIES STRAINERS

FAB-STR	: FABRICATED BASKET STRAINER
FAB-SAE	: FABRICATED BASKET STRAINER WITH AIR ELIMINATOR HEAD
YFAB-STR	: FABRICATED Y-TYPE STRAINER
FAB-DXSTR	: FABRICATED DUPLEX TYPE STRAINER

PRESSURE RATING : ANSI 150 /300 /600 /900 /1500 RF, RTJ

SIZES : 1" NB TO 24" NB ANSI 150/300/600
1" NB TO 16" NB ANSI 900/1500

MATERIALS : CARBON STEEL, LOW TEMPERATURE CARBON STEEL(LTCS), NACE+SOUR APPLICATIONS, STAINLESS STEEL

The **CLAMPCO CONTROLS** is a truly customizable Strainer designed to meet virtually any operating condition and handle almost any fluid. It provides unsurpassed flexibility for protecting metering systems against solid foreign particles. A built in Air Eliminator option can automatically remove static air before it reaches the meter. FAB Strainers provide unsurpassed flexibility by way of varied nozzle configurations, inlet / outlet sizes, in-line or offset nozzles, oversized shells for low pressure drop applications and material combinations for Low Temperature, NACE and Sour Gas applications not available in cast designs

Salient Features:

- Truly customizable design
- Streamlined flow path for low pressure drops
- Large screen areas – less frequent cleaning and no increase in pressure drop till 50%
- Different nozzle sizes, positions, configurations to meet system requirements
- Choice of special flange facings (RTJ / T&G etc) and also BW ends
- Multiple basket to ensure that maximum diameters do not exceed 250 mm so that Baskets can withstand 3.0 Bar Diff. pressure and can be easily removed without external tackles.
- Standard Basket sizes so that minimum spare Basket inventories are required

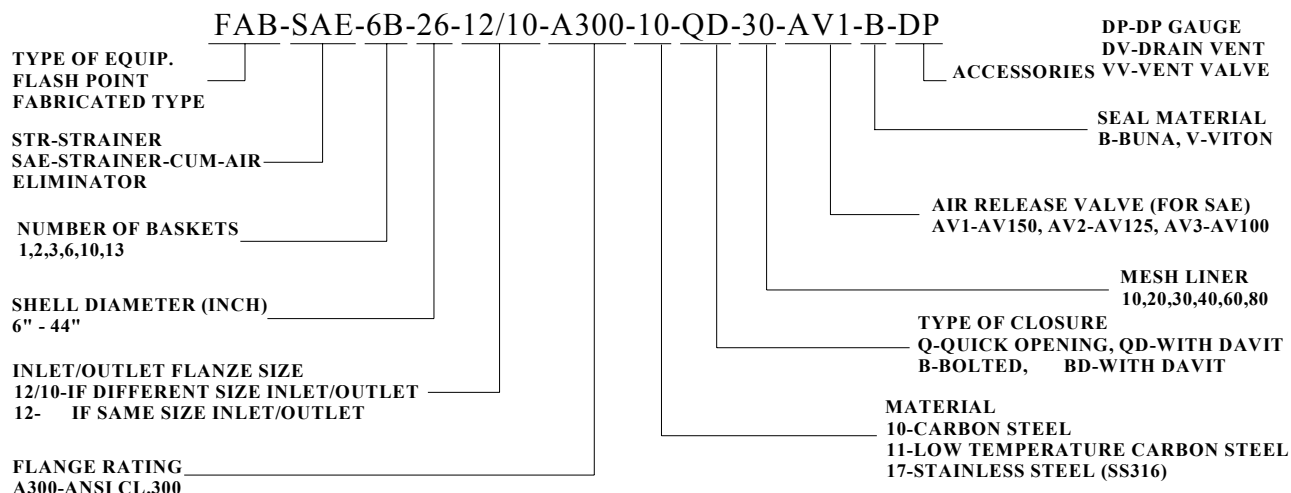
Design, Construction and Operation:

FAB Series of Strainers are designed for a wide range of operating pressures and temperatures. The body is constructed from rolled plates or seamless pipes closed by a bottom head. The basket is fitted on a precision-machined basket holder, which is welded on an inclined partition plate separating the Strainer inlet and outlet. The liquid enters a streamlined inlet path and flows into the basket, which retains the solid particles. The basket can be accessed for removal and cleaning through a cover, which can be bolted, or quick opening type. Connections for bottom Drain, Vent and Differential Pressure Indicators are provided. The strainers are supported on sturdy structural legs and are fitted with lifting lugs or eyebolts for mechanical lifting. Davits are provided on larger sizes FAB-1B-12 & above for ease of opening the covers.



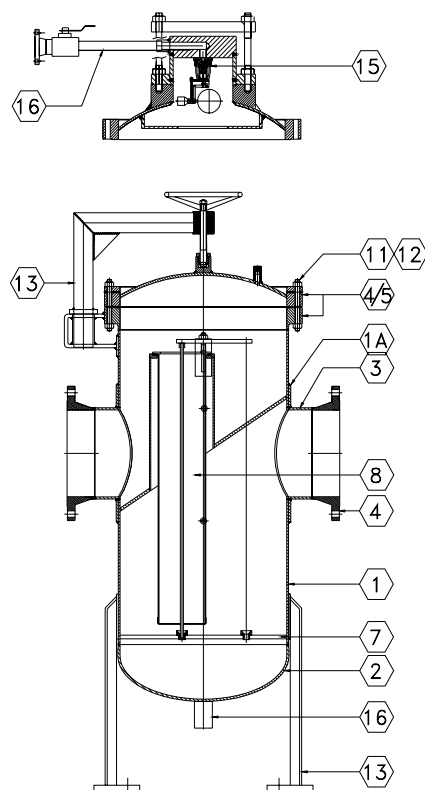
FAB Series of Strainers are Pressure Vessels designed to ASME Section VIII Div.1. Certification of manufacture and pressure testing and pressure drop testing by 3rd Party Inspection agencies are possible.

Model Code Generation:



Part List & Materials of Construction:

Part No.	Part Name	Material 10	Material 11	Material 17
1	BODY SHELL	SA 106 Gr.B /	SA 333 Gr.6 /	SA 240 Type316 /
1a	PAD PLATES	SA 516 Gr.70	SA 516 Gr.70 (IMPACT TESTED)	SA 312 Gr.TP316
2	DISHED ENDS	SA 516 Gr.70	SA 516 Gr.70-S5	SA 240 Type 316
3	NOZZLE PIPE	SA 106 Gr.B	SA 333 Gr.6	SA 312 Gr.TP316
4	BODY FLG. / QOC	SA 105	SA 350 Gr. LF2	SA 182 Gr. F316
5	TOP COVER	SA 516 Gr.70	SA 516 Gr.70	SA 240 Type316
6	NOZZLE FLG.	SA 105	SA 350 Gr. LF2	SA 182 Gr. F316
7	BASKET SUPPORTS	SA 106 Gr.B /	SA 333 Gr.6 /	SA 312 Gr.TP316
		SA 516 Gr.70	SA 516 Gr.70	
8	SCREEN ELEMENT	AISI 316	AISI 316	AISI 316
9	SEALS	NITRILE / VITON	NITRILE / VITON	NITRILE / VITON
10	BODY GASKET	SP.WD.SS304	SP.WD.SS304	SP.WD.SS304
11	STUDS	SA 193 Gr.B7	SA 193 Gr.B7	SA 193 Gr.B8
12	NUTS	SA 194 Gr.2H	SA 194 Gr.4	SA 194 Gr.8
13	STANDS, DAVITS & ATTACHMENT	CS	CS	CS
14	SOCKETS	SA 105	SA 350 Gr. LF2	SA 182 Gr. F316
15	AIR ELIMINATOR	SS 316	SS 316	SS 316
16	DRAIN / VENT	SA 106 Gr.B /	SA 333 Gr.6 /	SA 312 Gr.TP316/
		SA 105	SA 350 Gr. LF2	SA 182 Gr. F316
17	NAME PLATE	AISI 304	AISI 304	AISI 304



Limiting Conditions (Pressure / Temperature):

	Pr. Cl. 150		Pr. Cl. 300		Pr. Cl. 600		Pr. Cl. 900		Pr. Cl. 1500	
	Design Pressure	Design Temp.	Design Pressur	Design Temp.	Design Pressure	Design Temp.	Design Pressure	Design Temp.	Design Pressure	Design Temp.
Material 10	19.5	0-65° C	49.75	0-65° C	99.5	0-65° C	149.2	0-65° C	248.9	0-65° C
Material 11	19.5	(-)29-65°C	49.75	(-)29-65°C	99.5	(-)29-65°C	149.2	(-)29-65°C	248.9	(-)46-65° C
Material 17	17.93	(-)29-65°C	47.11	(-)29-65°C	94.23	(-)29-65°C	141.35	(-)29-65°C	235.4	(-)46-65° C

* Hydraulic Test Pressure will be 1.3 times Design Pressure

Some Tips.....

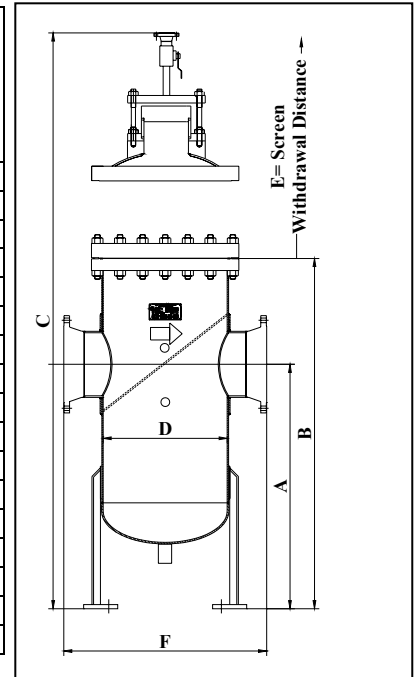
1. Use a Strainer several times larger than the pipeline to ensure adequate flow.
2. Always select a basket perforation that is half of the particle to be removed.
3. Keep a clean extra basket to quickly replace a dirty basket and eliminate down time.

When enquiring please state:

Flow, Temperature, Pressure, Viscosity, Max. Allowable Pressure Drop (Clean, Dirty), Material, Connection Sizes & Types, Desired Accessories, Required Approvals, Material Certificates and Test Reports.

Basket Strainer Pressure Class A150: Dimensions & Weights

Model FAB	Std. Inlt Size	Drn. Size	A	B	C**	D	E	F***	Gross Bask. Area Cm2	Ratio Open Bask. / Inlet Area	Wt. Kg.
1B-6	3"	1"	600	850	1250	168	350	508	710	3.25:1	86
1B-8	4"	1"	750	1125	1575	219	500	620	1413	3.79:1	128
1B-10	5"	1"	800	1175	1625	273	525	700	2400	4.14:1	178
1B-12	6"	1 1/2"	1000	1500	2000	323	750	750	3520	4.13:1	220
1B-14	6"	1 1/2"	1100	1600	2100	356	850	780	4900	3.33:1	300
1B-16	8"	1 1/2"	1100	1600	2100	406	850	900	6280	4.31:1	352
2B-18	8"	1 1/2"	1200	1750	2250	457	1050	950	8530	5.86:1	486
3B-20	10"	1 1/2"	1250	1850	2350	508	1050	1000	12800	5.53:1	587
3B-22	12"	2"	1250	1875	2425	558	1050	1070	14600	4.44:1	647
3B-24	12"	2"	1250	1900	2450	610	1050	1100			
6B-26	14"	2"	1250	1925	2500	660	1050	1150	25600	6.32:1	856
6B-28	14"	2"	1300	1925	2500	711	1050	1225	25600		
6B-30	16"	2"	1300	1925	2500	762	1050	1280	29200	5.42:1	1094
6B-33	18"	2"	1300	1925	2500	838	1050	1400	35600	5.22:1	1307
6B-36	20"	2"	1350	1950	2525	917	1050	1490	35600	4.30:1	1550
10B-40	22"	3"	1350	1950	2525	1016	1050	1596	48700	4.78:1	1968
13B-44	24"	3"	1375	1975	2550	1118	1050	1700	63300	5.30:1	2434



* Larger Sizes available. Consult factory.

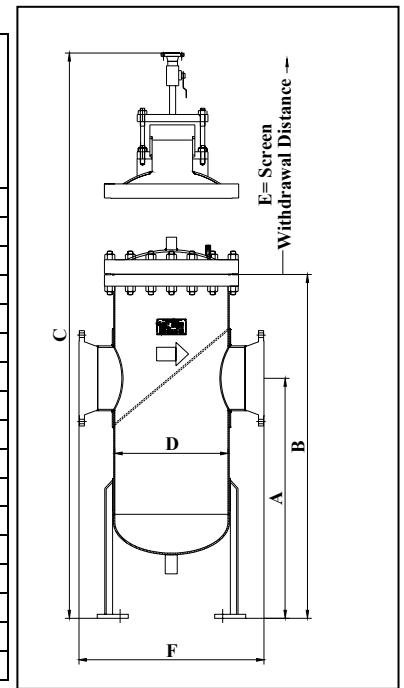
** For Strainer with air eliminator head only;

***For Strainer with reduced inlet / outlet sizes consult factory

In the interest of continuous product development we reserve the right to change dimensions, specifications without notice.

Basket Strainer Pressure Class A300 : Dimensions & Weights

Model FAB	Std. Inlt Size	Drn. Size	A	B	C**	D	E	F***	Gross Bask. Area Cm2	Ratio Open Bask./ Inlet Area	Wt. Kg.
1B-6	3"	1"	600	850	1250	168	350	530	710	3.65:1	110
1B-8	4"	1"	750	1125	1575	219	500	640	1413	4.24:1	182
1B-10	5"	1"	800	1175	1625	273	525	720	2400	4.56:1	250
1B-12	6"	1 1/2"	1000	1500	2000	323	750	770	3520	4.62:1	370
1B-14	6"	1 1/2"	1100	1600	2100	356	850	800	4900	3.64:1	470
1B-16	8"	1 1/2"	1100	1600	2100	406	850	925	6280	4.76:1	607
2B-18	8"	1 1/2"	1200	1750	2250	457	1050	970	8530	6.44:1	734
3B-20	10"	1 1/2"	1250	1850	2350	508	1050	1032	12800	5.87:1	907
3B-22	12"	2"	1250	1875	2425	558	1050	1100	14600	4.70:1	1168
3B-24	12"	2"	1250	1900	2450	610	1050	1130			
6B-26	14"	2"	1250	1925	2500	660	1050	1180	25600	6.75:1	1624
6B-28	14"	2"	1300	1925	2500	711	1050	1250	25600		
6B-30	16"	2"	1300	1925	2500	762	1050	1310	29200	5.87:1	2225
6B-33	18"	2"	1300	1925	2500	838	1050	1440	35600	5.72:1	2736
6B-36	20"	2"	1350	1950	2525	917	1050	1530	35600	4.58:1	3214
10B-40	22"	3"	1350	1950	2525	1016	1050	1630	48700	4.90:1	3075
13B-44	24"	3"	1375	1975	2550	1118	1050	1730	63300	5.60:1	3779

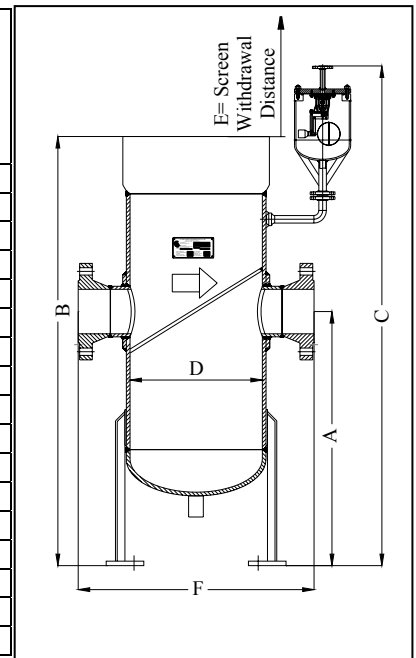


* Larger Sizes available. Consult factory.

** For Strainer with air eliminator head only; ***For Strainer with reduced inlet / outlet sizes consult factory

Basket Strainer Pressure Class A600: Dimensions & Weights

Model FAB	Std. Inlt Size	Drn. Size	A	B	C**	D	E	F***	Gross Bask. Area Cm2	Ratio Open Bask./ Inlet Area	Wt. Kg.
1B-6	3"	1"	650	950	1250	168	350	550	710	3.74:1	135
1B-8	4"	1"	750	1225	1575	219	500	670	1413	4.71:1	220
1B-10	5"	1"	800	1300	1625	273	525	750	2400	3.18:1	352
1B-12	6"	1 1/2"	1000	1650	2000	323	750	808	3520	4.62:1	459
1B-14	6"	1 1/2"	1100	1750	2100	356	850	838	4900	3.64:1	595
1B-16	8"	1 1/2"	1100	1750	2100	406	850	970	6280	3.75:1	738
2B-18	8"	1 1/2"	1200	1900	2250	457	1050	1020	8530	6.44:1	814
3B-20	10"	1 1/2"	1250	2000	2350	508	1050	1108	12800	6.13:1	1094
3B-22	12"	2"	1250	2000	2425	558	1050	1168	14600	4.92:1	1341
3B-24	12"	2"	1250	2100	2450	610	1050	1220			
6B-26	14"	2"	1250	2100	2500	660	1050	1290	25600	7.12:1	1894
6B-28	14"	2"	1300	2100	2500	711	1050	1340	25600		
6B-30	16"	2"	1300	2100	2500	762	1050	1410	29200	6.15:1	2515
6B-33	18"	2"	1300	2100	2500	838	1050	1506	35600	5.98:1	3229
6B-36	20"	2"	1350	2150	2525	917	1050	1595	35600	4.80:1	4022
10B-40	22"	3"	1350	2150	2525	1016	1050	1700	48700	5.40:1	4720
13B-44	24"	3"	1375	2175	2550	1118	1050	1820	63300	5.91:1	5801



* Larger Sizes available. Consult factory.

** For Strainer with air eliminator head only; ***For Strainer with reduced inlet / outlet sizes consult factory

In the interest of continuous product development we reserve the right to change dimensions, specifications without notice

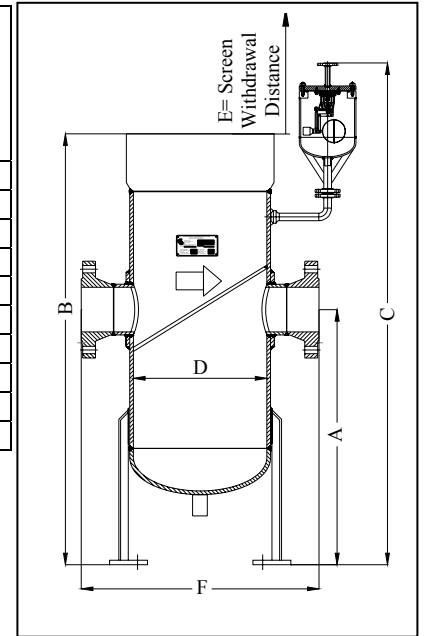
Basket Strainer Pressure Class A900 : Dimensions & Weights

Model FAB	Std. Inlt Size	Drn. Size	A	B	C**	D	E	F***	Gross Bask. Area Cm2	Ratio Open Bask./ Inlet Area	Wt. Kg.
1B-6	3"	1"	650	950	1250	168	350	570	710	4.42:1	156
1B-8	4"	1"	750	1225	1575	219	500	695	1413	5.21:1	258
1B-10	5"	1"	800	1300	1625	273	550	775	2110	4.60:1	408
1B-12	6"	1"	1000	1650	2000	323	750	880	3080	4.42:1	561
1B-14	6"	1 1/2"	1100	1750	2100	356	850	976	4000	3.75:1	752
1B-16	8"	1 1/2"	1100	1750	2100	406	850	1026	5900	4.48:1	896
2B-18	8"	1 1/2"	1200	1900	2250	457	1050	1120	5940	3.80:1	1105
3B-20	10"	1 1/2"	1250	2000	2350	508	1050	1208	7620	2.88:1	1529
3B-24	12"	1 1/2"	1250	2100	2450	610	1050	1335	14600	4.57:1	2078
6B-28	14"	2"	1300	2100	2500	711	1050	1440	25600	6.06:1	2945

* Larger Sizes available. Consult factory.

** For Strainer with air eliminator head only

***For Strainer with reduced inlet / outlet sizes consult factory



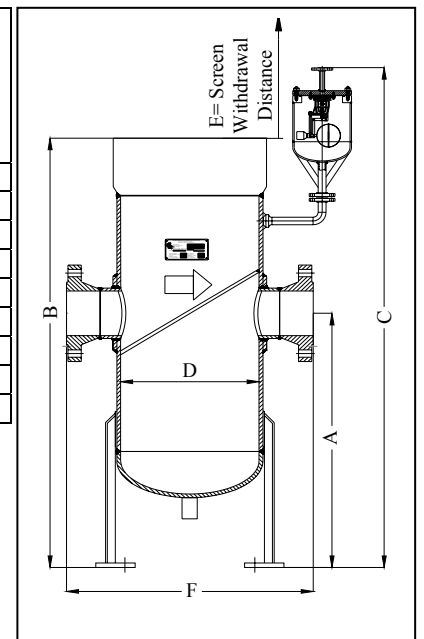
Basket Strainer Pressure Class A1500 : Dimensions & Weights

Model FAB	Std. Inlt Size	Drn. Size	A	B	C**	D	E	F***	Gross Bask. Area Cm2	Ratio Open Bask./ Inlet Area	Wt. Kg.
1B-6	3"	1"	650	950	1250	168	350	600	710	5.77:1	176
1B-8	4"	1"	750	1225	1575	219	500	715	1413	6.20:1	280
1B-10	5"	1"	800	1300	1625	273	550	830	2110	4.94:1	468
1B-12	6"	1"	1000	1650	2000	323	750	950	3080	5.45:1	682
1B-14	8"	1 1/2"	1100	1750	2100	356	850	1080	4000	3.66:1	966
1B-16	8"	1 1/2"	1100	1750	2100	406	850	1130	5900	4.48:1	1141
2B-18	10"	1 1/2"	1200	1900	2250	457	1050	1260	5940	3.64:1	1364
3B-20	12"	1 1/2"	1250	2000	2350	508	1050	1370	7620	3.35:1	2128
3B-24	14"	1 1/2"	1250	2100	2450	610	1050	1510	14600	5.16:1	3069

* Larger Sizes available. Consult factory.

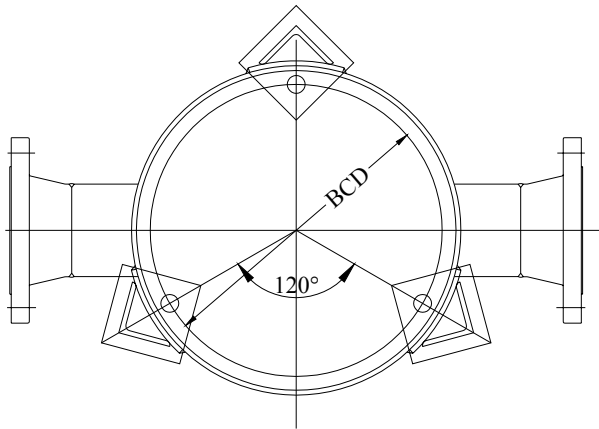
** For Strainer with air eliminator head only

***For Strainer with reduced inlet / outlet sizes consult factory

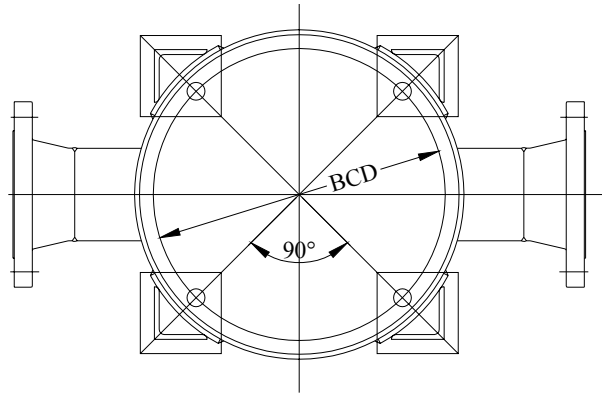


In the interest of continuous product development we reserve the right to change dimensions, specifications without notice

Leg Support Details:



3-Legs
(Standard for FAB-1B-6 to FAB-2B-20)



4-Legs
(Standard for FAB-3B-20 to FAB-13B-44)

Nom. Shell Dia.	Base Plate Width	Base Plate Thk mm	BCD mm	No. of Holes X Dia	Size of Angle
6	} 85 mm	10	259 311 362	} 3 x 22 Dia.	50 x 50 x 6
8					
10					
12					
14	} 100 mm	12	414 467 508	} 3 x 22 Dia.	65 x 65 x 8
16					
18					
20	} 120 mm	16	559 612 662	} 4 x 25 Dia.	75 x 75 x 10
22					
24					
26	} 130 mm	20	715 767 840	} 4 x 25 Dia.	75 x 75 x 10
28					
30					
33	} 150 mm	25	920 1025 1125	} 4 x 32 Dia.	80 x 80 x 12
36					
40					
44					

Screen and Liner Data:

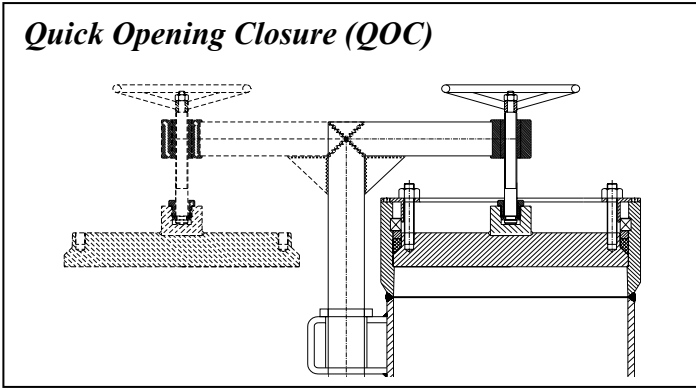
Basket is constructed from SS304 perforated plate (1.0 mm thk) 5 mm diameter holes on 7 mm staggered pitch (56% free). Strainers of shell size 18" – 44" have multiple Baskets.

Liner Screen:

Mesh	Opening Size inch	Opening Microns	Dia. Of Wire mm	% Free Area
4	0.208	5160	1.19	56.0
10	0.075	2460	0.635	56.3
20	0.034	872	0.40	46.2
30	0.020	513	0.33	37.1
40	0.015	384	0.25	36
60	0.009	231	0.18	34
80	0.0075	178	0.13	36
100	0.0055	141	0.11	30
150	0.0041	105	0.066	37.4
200	0.0029	74	0.0021	33.6
300	0.0018	46	0.0015	29.7

Standard Accessories for Fabricated Strainers:

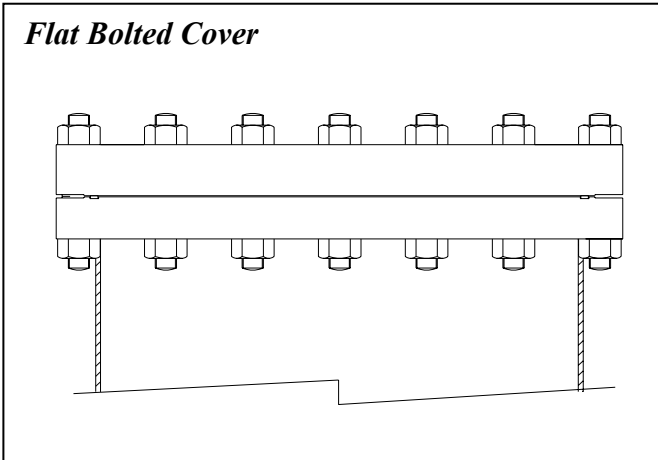
Quick Opening Closure (QOC)



In order to facilitate ease of Screen Removal for Cleaning and Maintenance. We can provide SEG4LOCK type Quick Opening Closures (QOC), which conform to ASME Sec. VIII. Div.1. The SEG4LOCK QOC with a Davit Assembly needs only one technician to open, clean and reassemble the Basket Elements, all in less than ½ hour. For details of Quick Opening Closure type SEG4LOCK refer our Catalogue TDS NO.: SEG4LOCK-2K03

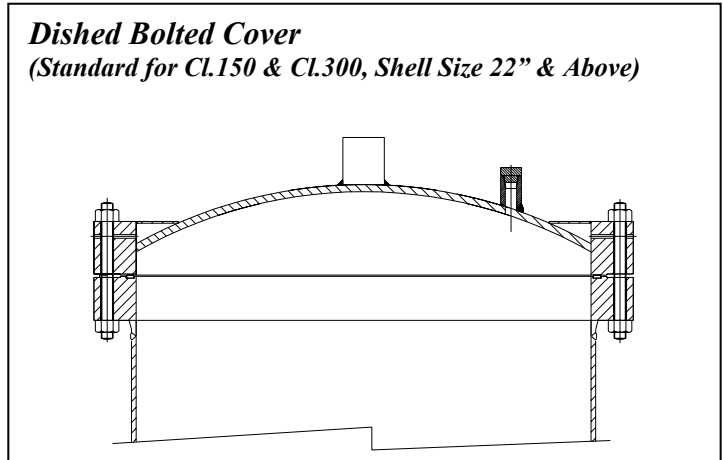
Other Closure Options:

Flat Bolted Cover

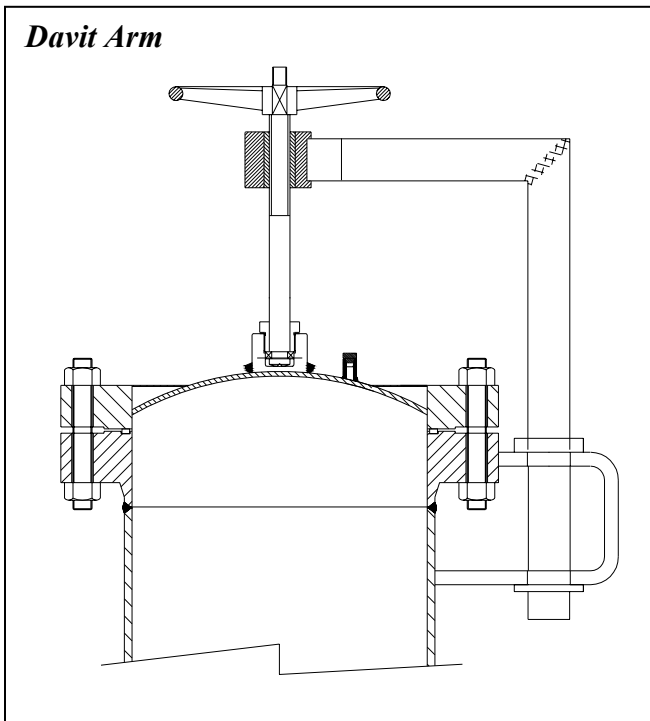


Dished Bolted Cover

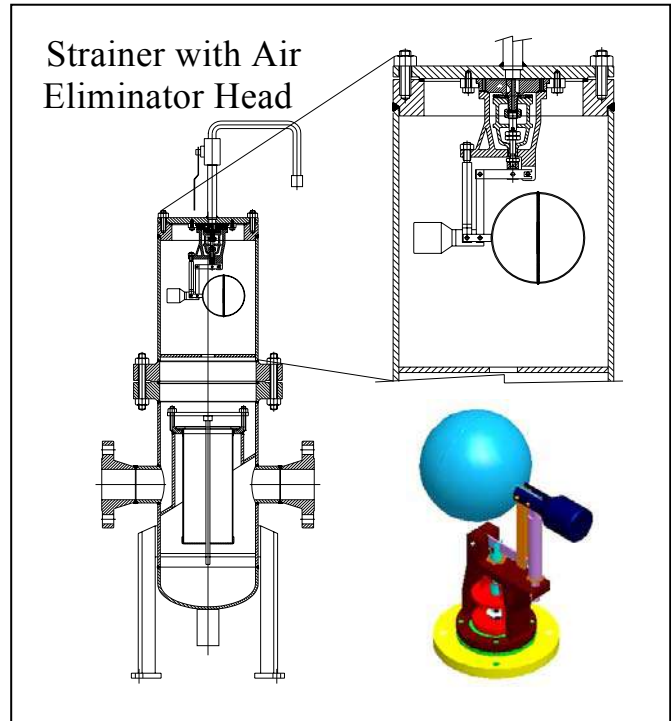
(Standard for Cl.150 & Cl.300, Shell Size 22" & Above)



Davit Arm



Strainer with Air Eliminator Head

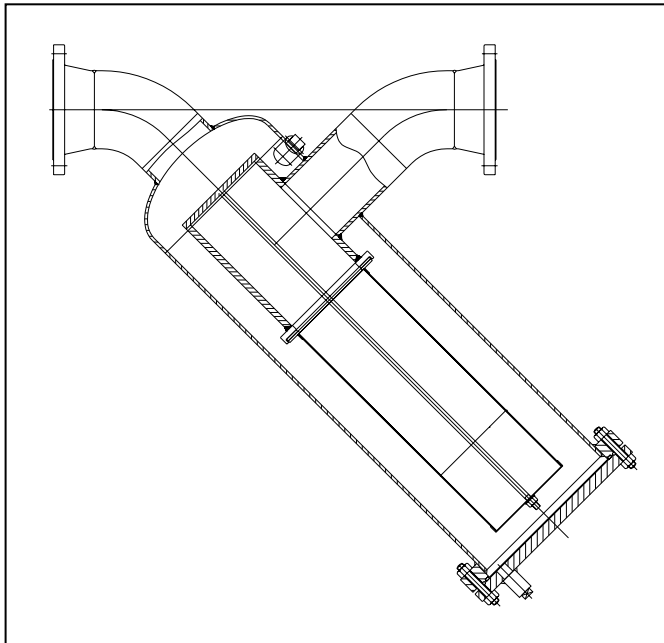


To aid in removal of flange covers without the need for lifting equipment, recommended for high pressure and / or large / heavy strainer covers.

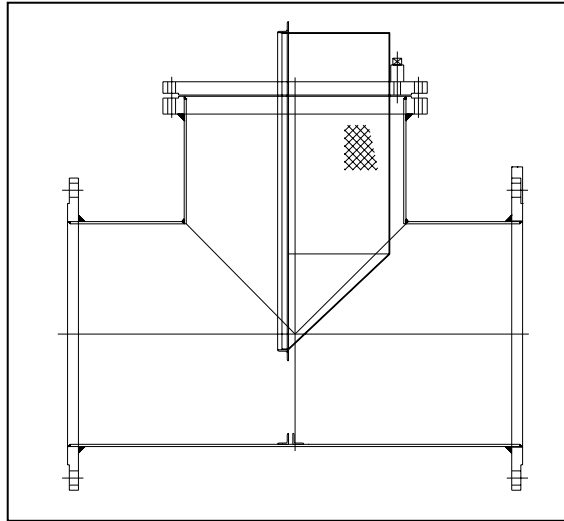
For details on Automatic Pilot & Float type Air Eliminator refer our Catalogue AV-125 & AV-150

Other Types of Fabricated Strainers:

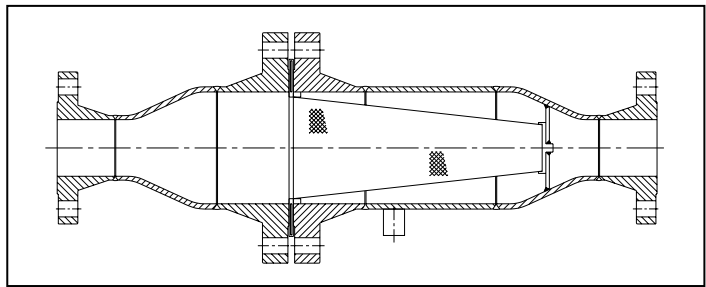
Y- Type Fabricated Strainer



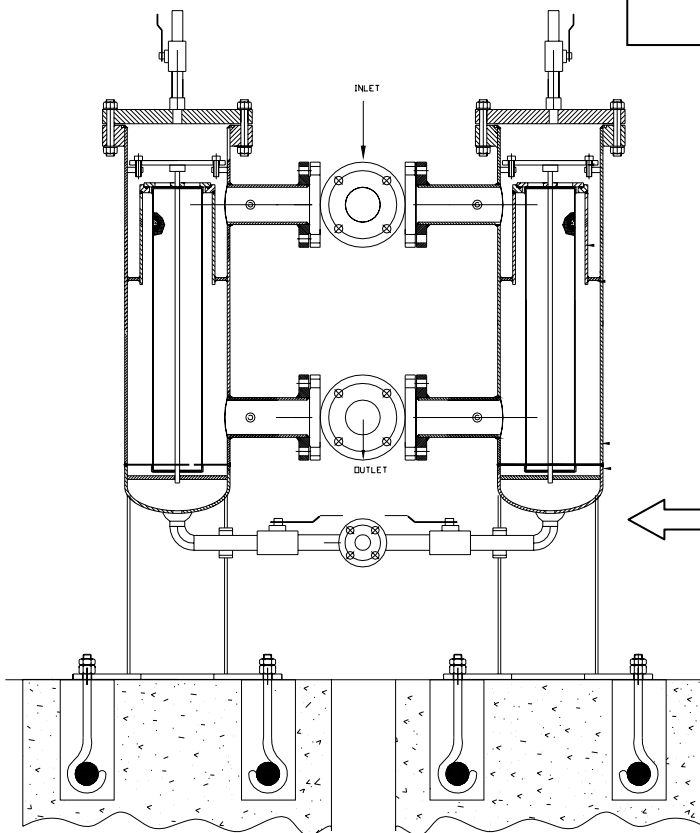
Bath Tub Strainer



Conical Strainer



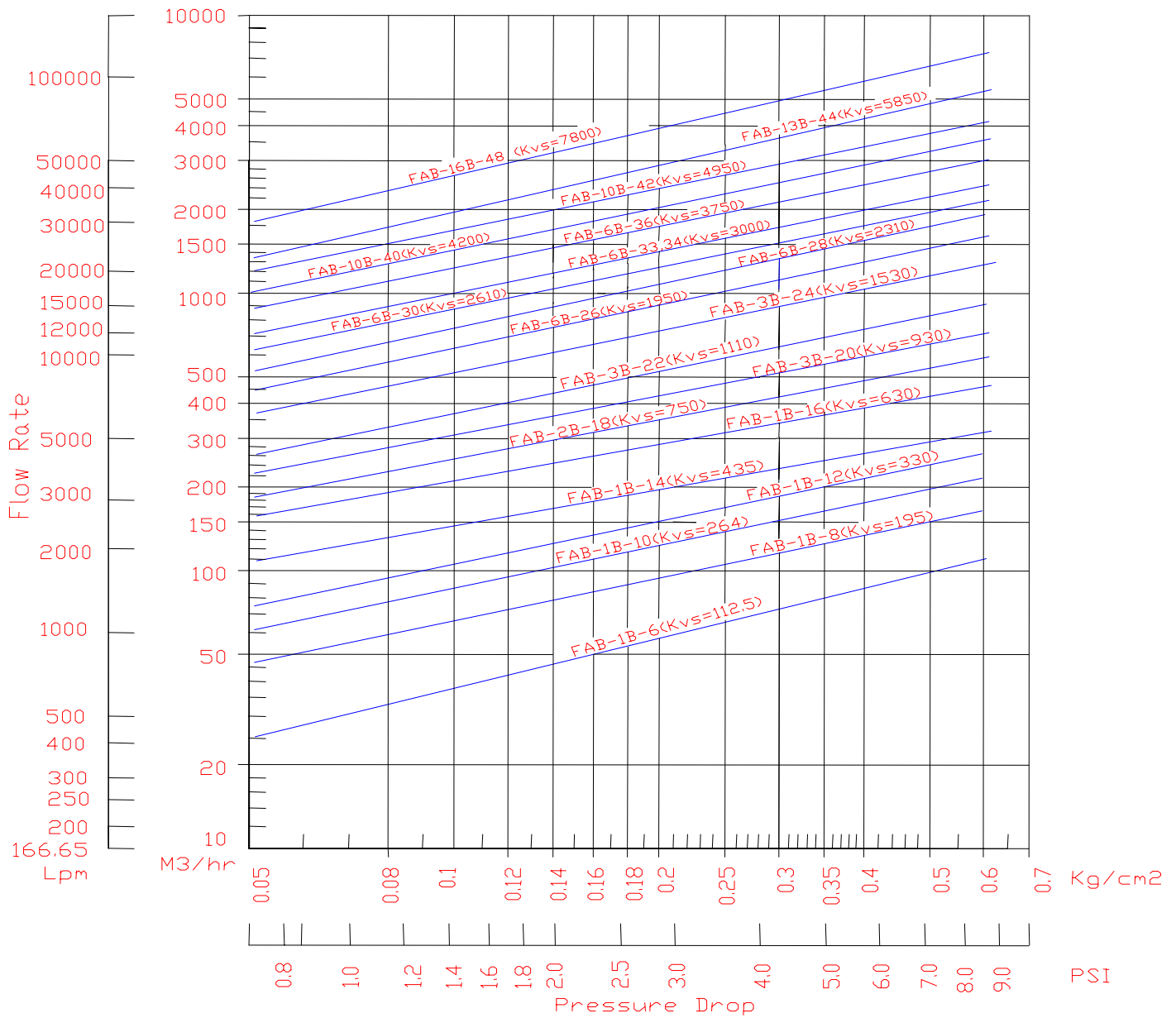
Duplex Strainer



For fluid handling systems where the flow cannot be shutdown for basket cleaning such as compressors, pumps, condensers, lubricating systems Duplex Strainers provide the best solution. Changeover is accomplished by use of a handwheel operated Butterfly valve, 3-way Ball valve, Cam operated valve and also with your choice of valves.

Consult factory for Dimensional Data and other Specifications

PRESSURE DROP CURVE & Kvs VALUES **BASKET STRAINER TYPE FAB**



$$\Delta P = \rho [Q/Kv]^2 \times \text{Mesh factor(CM)} \times \text{Visc. factor (CV)}$$

Where ΔP = Pressure drop in bar.

ρ = Density Kg/dm³

Q = Flow rate in m³/hr

Kv= Flow coefficient value (see chart)