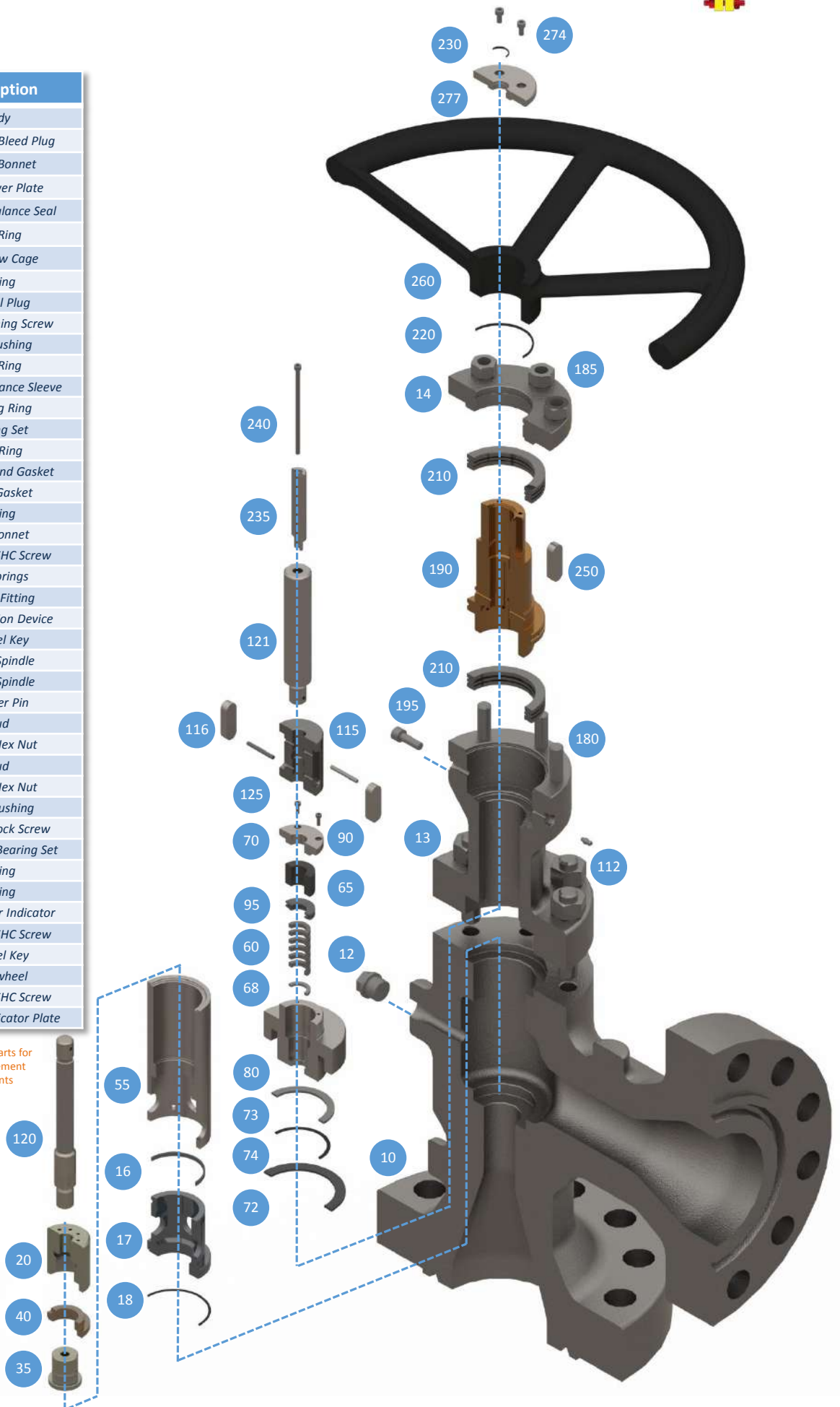


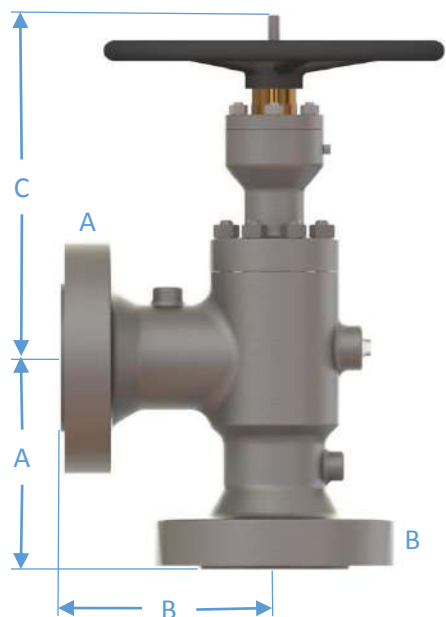
# Choke Valve Construction

Position	Description
10	Body
12	Hex. Head Bleed Plug
13	Upper Bonnet
14	Drive Cover Plate
(15)	Pressure Balance Seal
(16)	Seal Ring
17 •	Seat Flow Cage
(18)	O-Ring
20 •	Control Plug
35 •	Disc Retaining Screw
40 •	Seat Bushing
(50)	Seal Ring
55 •	Pressure Balance Sleeve
(60)	Packing Ring
(65)	Packing Set
(68)	Junk Ring
(72)	Spiral Wound Gasket
(73)	Crush Gasket
(74)	O-Ring
80 •	Mid-Bonnet
90	Hexagon SHC Screw
95 •	Cup Springs
112	Grease Fitting
115	Anti-Rotation Device
116	Parallel Key
120 •	Lower Spindle
121 •	Upper Spindle
125	Cylinder Pin
140	Stud
160	Heavy Hex Nut
180	Stud
185	Heavy Hex Nut
190	Drive Bushing
195	Position Lock Screw
210 •	Cylindrical Bearing Set
(220)	O-Ring
(230)	O-Ring
235	Micrometer Indicator
240	Hexagon SHC Screw
250	Parallel Key
260	Handwheel
274	Hexagon SHC Screw
277	Position indicator Plate

( ) Indicates recommended spare parts for start-up & 2 year service replacement  
 • Indicates capitol spare components



# ASME Angle Choke Valve Dimensions



ASME RF Flanged Angle Choke Valve Dimensions <sup>12</sup>							
Trim	Model (A x B)	„A“ (mm) <sup>3</sup>	„B“ (mm) <sup>3</sup>	„C“ (mm)	„C <sub>wo</sub> “ (mm) <sup>4</sup>	Weight (Kg) <sup>5</sup>	Max. C <sub>v</sub> <sup>6</sup>
1/8 (3)	2" x 2"-600#	9,88 (251)	7,77 (197)	14,76 (375)	22,24 (565)	55 (25)	0,3
	3" x 3"-600#	9,66 (245)	7,72 (196)	17,13 (435)	25,59 (650)	110 (50)	
	2" x 2"-900#	10,41 (264)	8,22 (209)	17,90 (455)	26,97 (685)	120 (55)	
	3" x 3"-900#		8,47 (215)		130 (60)		
	2" x 2"-1500#	9,88 (251)	7,77 (197)	25,00 (635)	31,30 (795)	120 (55)	
	3" x 3"-1500#	11,00 (280)	9,06 (230)	25,59 (650)	32,09 (815)	165 (75)	
	2" x 2"-2500#	11,44 (291)		31,50 (660)	32,48 (825)		
3" x 3"-2500#	13,00 (330)	11,06 (281)	27,56 (700)	41,34 (1050)	220 (100)		
1/4 (6)	2" x 2"-600#	9,88 (251)	7,77 (197)	14,76 (375)	22,24 (565)	55 (25)	1,5
	3" x 3"-600#	9,66 (245)	7,72 (196)	17,13 (435)	25,59 (650)	110 (50)	
	4" x 4"-600#	17,32 (439)	9,16 (232)	32,68 (830)	40,94 (1040)	200 (90)	
	2" x 2"-900#	10,41 (264)	8,22 (209)	17,90 (455)	26,97 (685)	120 (55)	
	3" x 3"-900#		8,47 (215)		130 (60)		
	4" x 4"-900#	17,82 (452)	9,66 (245)	33,07 (840)	41,34 (1050)	220 (100)	
	2" x 2"-1500#	9,88 (251)	7,77 (197)	25,00 (635)	31,30 (795)	120 (55)	
	3" x 3"-1500#	11,00 (280)	9,06 (230)	25,59 (650)	32,09 (815)	165 (75)	
	4" x 4"-1500#	18,17 (460)	10,01 (254)	33,46 (850)	41,93 (1065)	265 (120)	
	2" x 2"-2500#	11,44 (291)	9,25 (230)	31,50 (660)	32,48 (825)	165 (75)	
	3" x 3"-2500#	13,00 (330)	11,06 (281)	27,56 (700)	41,34 (1050)	220 (100)	
	4" x 4"-2500#	20,76 (526)	12,63 (320)	36,02 (915)	45,28 (1150)	440 (200)	
2" x 2"-600#	9,88 (251)	7,77 (197)	14,76 (375)	22,24 (565)	55 (25)	5,5	
3" x 3"-600#	9,66 (245)	7,72 (196)	17,13 (435)	25,59 (650)	110 (50)		

ASME RF Flanged Angle Choke Valve Dimensions <sup>12</sup>							
Trim	Model (A x B)	„A“ (mm) <sup>3</sup>	„B“ (mm) <sup>3</sup>	„C“ (mm)	„C <sub>wo</sub> “ (mm) <sup>4</sup>	Weight (Kg) <sup>5</sup>	Max. C <sub>v</sub> <sup>6</sup>
1/2 (12)	4" x 4"-600#	17,32 (439)	9,16 (232)	32,7 (830)	40,9 (1040)	200 (90)	5,5
	6" x 6"-600#	23,28 (591)	18,40 (467)	43,9 (1115)	54,9 (1395)	430 (195)	
	2" x 2"-900#	10,41 (264)	8,22 (209)	17,9 (455)	27,0 (685)	120 (55)	
	3" x 3"-900#		8,47 (215)			130 (60)	
	4" x 4"-900#	17,82 (452)	9,66 (245)	33,1 (840)	41,3 (1050)	220 (100)	
	6" x 6"-900#	24,16 (613)	19,28 (489)	45,9 (1165)	57,5 (1460)	465 (210)	
	2" x 2"-1500#	9,88 (251)	7,77 (197)	25,0 (635)	31,3 (795)	120 (55)	
	3" x 3"-1500#	11,00 (280)	9,06 (230)	25,6 (650)	32,1 (815)	165 (75)	
	4" x 4"-1500#	18,17 (460)	10,01 (254)	33,5 (850)	41,9 (1065)	265 (120)	
	6" x 6"-1500#	25,38 (643)	20,50 (519)	66,9 (1700)	83,7 (2125)	530 (240)	
	2" x 2"-2500#	11,44 (291)	9,25 (230)	31,5 (660)	32,5 (825)	165 (75)	
	3" x 3"-2500#	13,00 (330)	11,06 (281)	27,6 (700)	41,3 (1050)	220 (100)	
	4" x 4"-2500#	20,76 (526)	12,63 (320)	36,0 (915)	45,3 (1150)	440 (200)	
	6" x 6"-2500#	29,38 (744)	24,50 (620)	49,8 (1265)	62,4 (1585)	880 (400)	
	5/8 (16)	2" x 2"-600#	9,88 (251)	7,77 (197)	14,8 (375)	22,2 (565)	
3" x 3"-600#		9,66 (245)	7,72 (196)	17,1 (435)	25,6 (650)	110 (50)	
4" x 4"-600#		17,32 (439)	9,16 (232)	32,7 (830)	40,9 (1040)	200 (90)	
6" x 6"-600#		23,28 (591)	18,40 (467)	43,9 (1115)	54,9 (1395)	430 (195)	
2" x 2"-900#		10,41 (264)	8,22 (209)	17,9 (455)	27,0 (685)	120 (55)	
3" x 3"-900#			8,47 (215)			130 (60)	
4" x 4"-900#		17,82 (452)	9,66 (245)	33,1 (840)	41,3 (1050)	220 (100)	
6" x 6"-900#		24,16 (613)	19,28 (489)	45,9 (1165)	57,5 (1460)	465 (210)	



<sup>1</sup> Additional sizes, connections, and configurations are available upon request; dimensions are subject to change.  
<sup>2</sup> Threaded, BWE, RF, RTJ, API, BX, and PE connections are available for all sizes and configurations.  
<sup>3</sup> ASME RF flanged dimensions are shown. Threaded, BWE, RTJ and ISO flanged dimensions are available upon request.  
<sup>4</sup> „C<sub>wo</sub>“ dimension is the same as the „C“ dimension shown on the drawing, with the addition of a pneumatic actuator.  
<sup>5</sup> Weights are based on a standard choke with out actuator(s), weights may vary based on trims and options selected.  
<sup>6</sup> C<sub>v</sub> Values given are subject to variation based upon valve end connections, trim selection, wear sleeves, and other options.